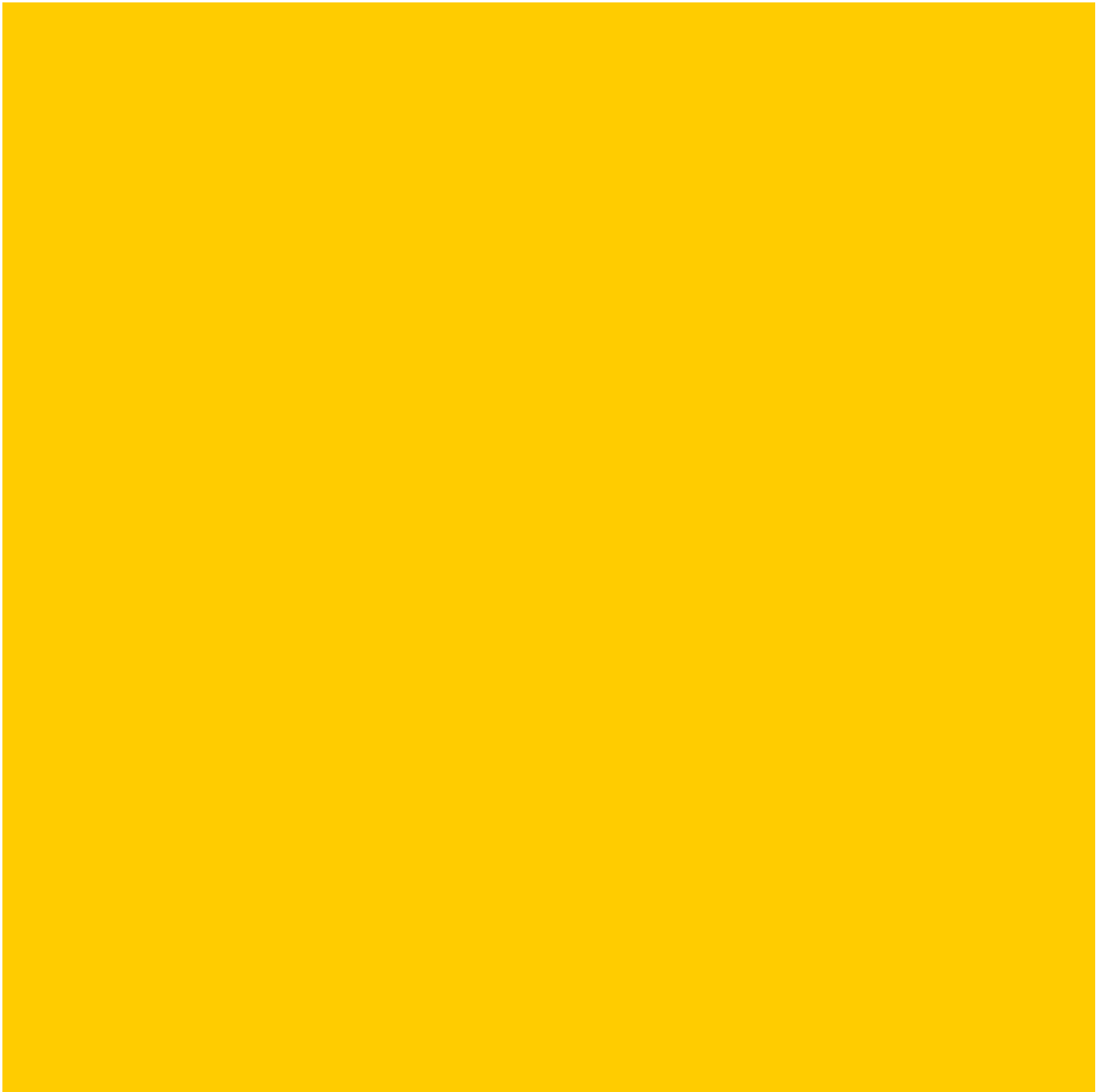
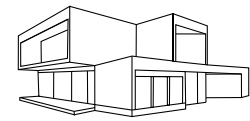


www.atlanteshouse.com

AtlantesHouse
Timber Frame House





AtlantesHouse
Timber Frame House

Frameworks for the construction of the cottage

The company offers AtlantesHouse design of glued timber bar for the construction of low-rise buildings. Glued laminated timber is made of timber with a moisture content of 12% softwood spruce, pine first second grade. It is also possible execution of the larch. The framework can be used for the construction of a dwelling house and for public buildings.

Weight of finished products (spruce, pine) **0.5 tonn/m³**.

Frame Ursa Minor, the design for the construction of a cottage on the technology fachwerk.

The proposal consists of:

- The construction Half-timbered houses made glued timber bar (esl tree species, pine)
- Packaging design
- Installation Instructions
- The package documentation for the project

The offer price 24300.00 USD

This document is not an official offer (public offer).

The volume of wood glued construction details 24.3 cubic meters

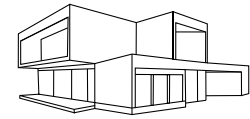
Hardware in the offer price is not included.

Delivery to the bid price is not included.

We offer a timber frame construction from glued timber bar - fachwerk constructin a design for independent assemblage by the customer. With that that the builder could erect independently a design on the site, and also independently get in the local market all accompanying elements of a box of the house - a bar for a walls and a roof not from laminated timber bar, the wall's material - plate S (it is focused-struzhechnaja a plate), heater Rockwool, is cement-struzhechnaja a plate, expanded polystyrene of mark S 20, a reinforcing grid, fixture for fachwerk designs (carving hairpins and nuts, sanitary screws, washers)

The fixture is not included into the house complete set. Fachwerk the design to fasten with: carving hairpins and nuts, sanitary screws, washers.

Fachwerk the design will roll to make a choice in questions of a choice of a lay-out of the house, a choice of a facade of the house of furnish, colour, windows their size and arrangements.

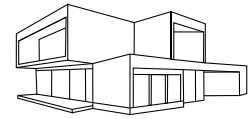


AtlantesHouse
Timber Frame House

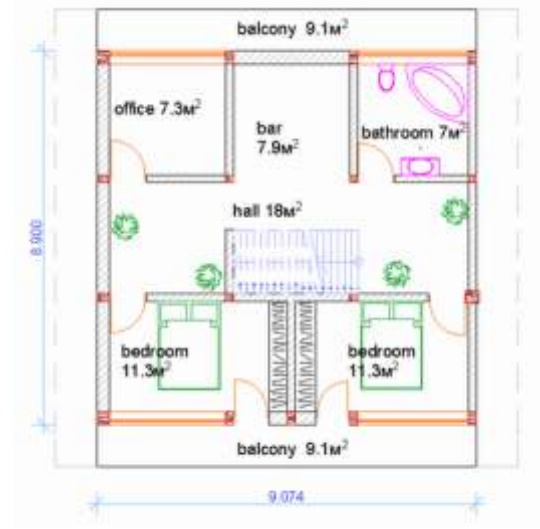
Frameworks for the construction of the cottage

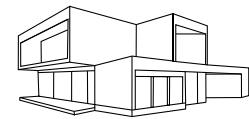
Half-timbered houses - a design for the construction of buildings and structures on frame technology. The design consists of 80 parts are made of glued timber bar tree species spruce, pine (with only the main rafters - 64 for details). The size of the design in terms of length 12 400 mm., Width 8900 mm., Height 7109 mm. All construction in the package is placed in a 40 'container. The total volume of 24.3 m³ parts (no rafter boards 21 m³), the net weight of 12 tons. On the ground floor area of 87.6 square meters, 72.4 sq m second floor, first floor ceiling height of 2.6 m, the second floor of 1.7 - 3.7 meters building area 110 square meters. Turnaround time (design) from 2 weeks to 3 months.





AtlantesHouse
Timber Frame House





The specification timber glued bar products for a frame construction fachwerk - Ursa Minor

				?			
1	90	300	12400	0.3348	4	1.34	Bottom necking axes A,B,C,D
2	90	300	8900	0.2403	5	1.20	Bottom necking axes 1,2,3,4,5
3	300	300	4980	0.4482	3	1.34	Post of an axes 1,4: 1A, 1D, 4B
4	300	180	4980	0.26892	4	1.08	Post of an axes 1,4: 1B, 1C, 4A, 4D
5	180	180	4980	0.161352	1	0.16	Post of an axes 4: 4C
6	300	180	6380	0.34452	4	1.38	Post of an axes 2,3: 2A, 2D, 3A, 3D
7	300	300	3660	0.3294	2	0.66	Post of an axes 5: 5A, 5D
8	300	180	3660	0.19764	2	0.40	Post of an axes 5: 5A, 5D
9	180	180	6360	0.206064	4	0.82	Post of an axes 2,3: 2B, 2C, 3B, 3C
10	300	135	4390	0.177795	2	0.36	Center post 2nd floor
11	300	135	13000	0.5265	4	2.11	Purlin NW
12	300	135	11000	0.4455	8	3.56	Dormant SE
13	300	135	11000	0.4455	5	2.23	Purlin of Rafters
14	300	80	12200	0.2928	4	1.17	Purlin NW center
15	300	180	6100	0.3294	2	0.66	Rafter
16	300	180	9500	0.513	2	1.03	Rafter
17	300	85	6100	0.15555	12	1.87	Rafter
18	300	85	9500	0.24225	12	2.91	Rafter
					80	24.26	3

The cost of the project works 350 rub/m² the total area of the house. The price of the design work includes drawings for the manufacture of parts, components and hardware specifications, shop drawings).

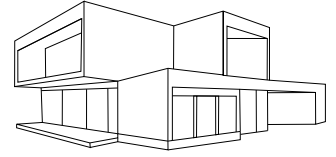
Additional drawings and specifications (trim, insulation, partitions) - 150 rub/m²

Network Engineering - 90 rub/m²

This document is not an official offer (public offer)

Prepayment of 70%.

Sincerely,
AtlantesHouse



www.atlanteshouse.com

AtlantesHouse
Timber Frame House

